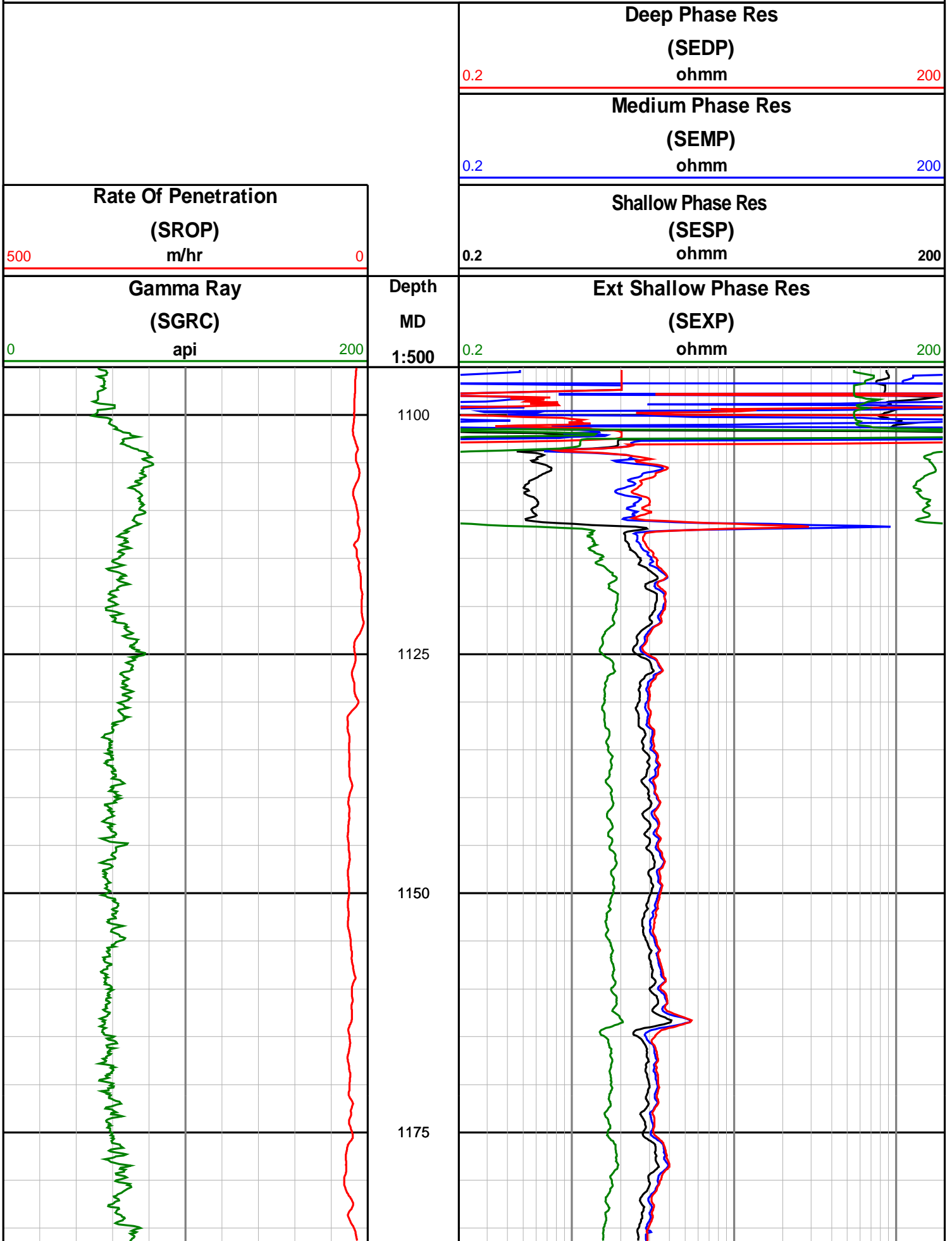


Anzon Australia Ltd

Basker-3

Realtime LWD Log (Permanent Datum - LAT)





1200

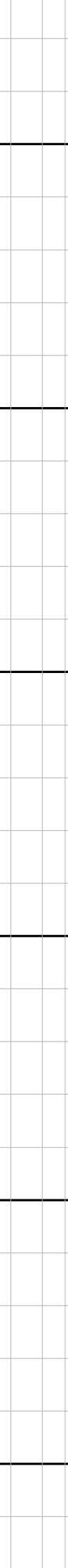
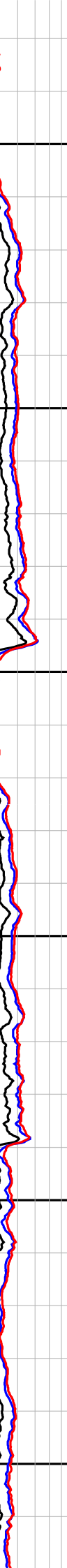
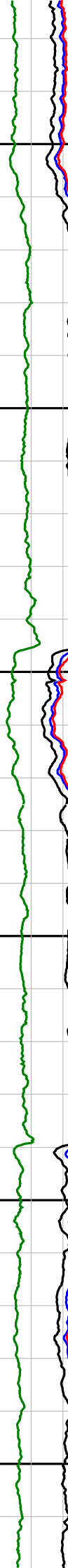
1225

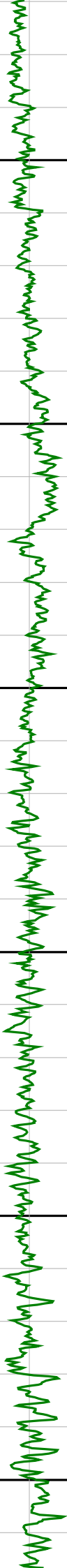
1250

1275

1300

1325





1350

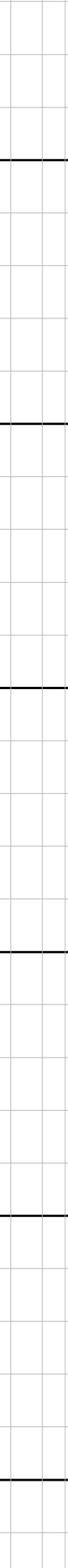
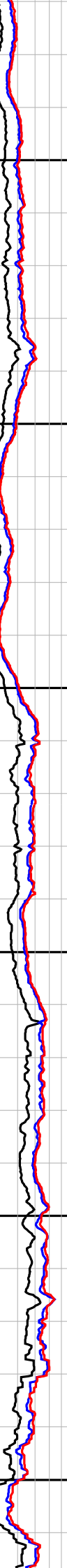
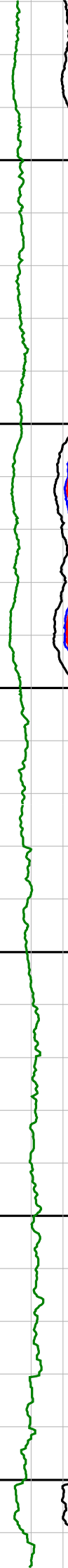
1375

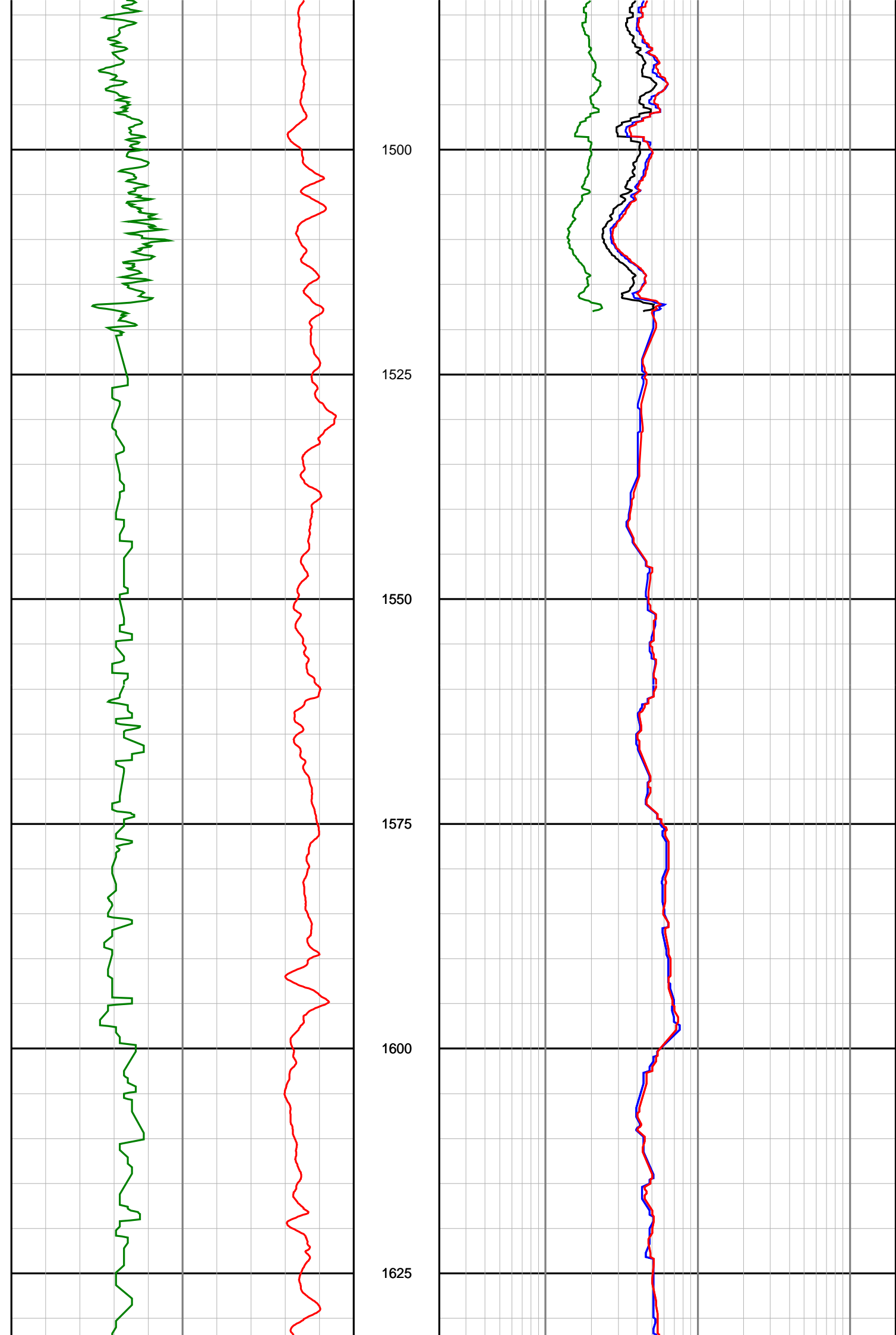
1400

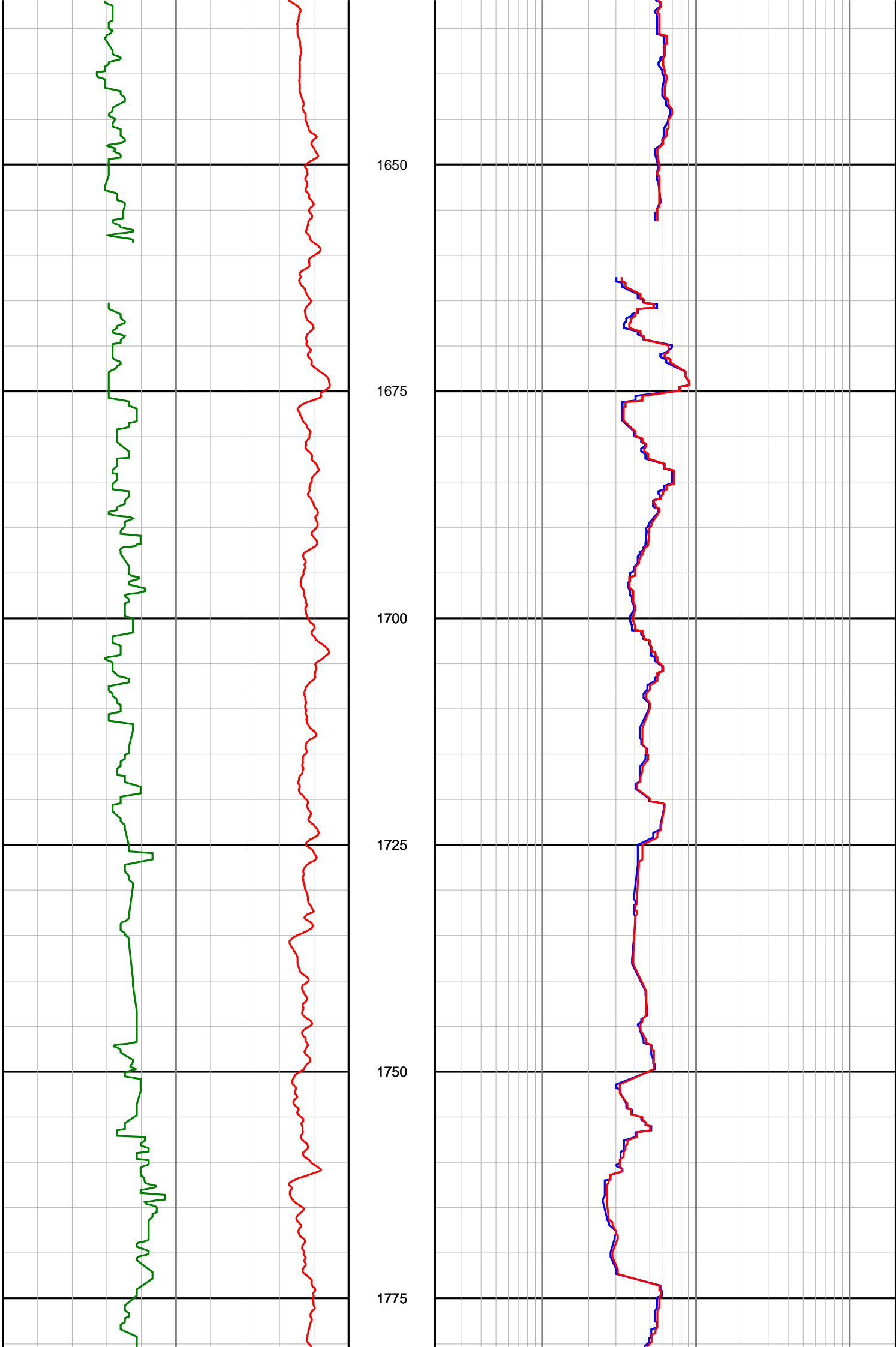
1425

1450

1475









1800

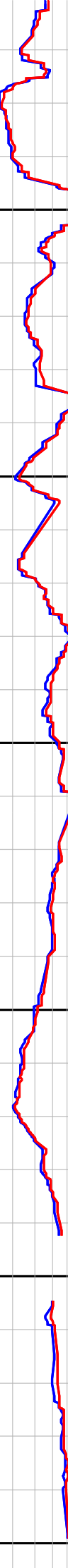
1825

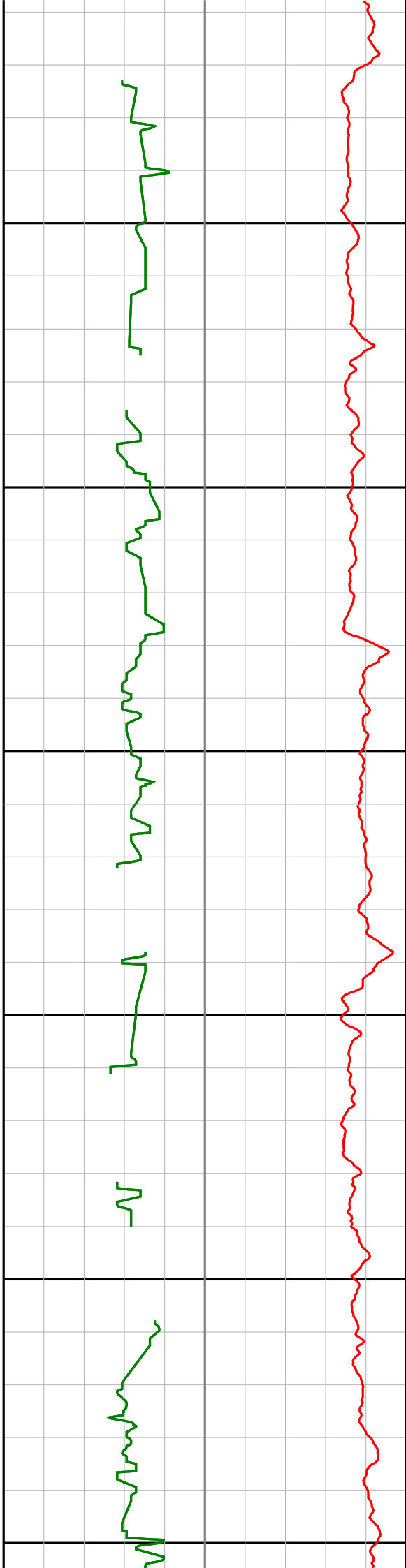
1850

1875

1900

1925





1950

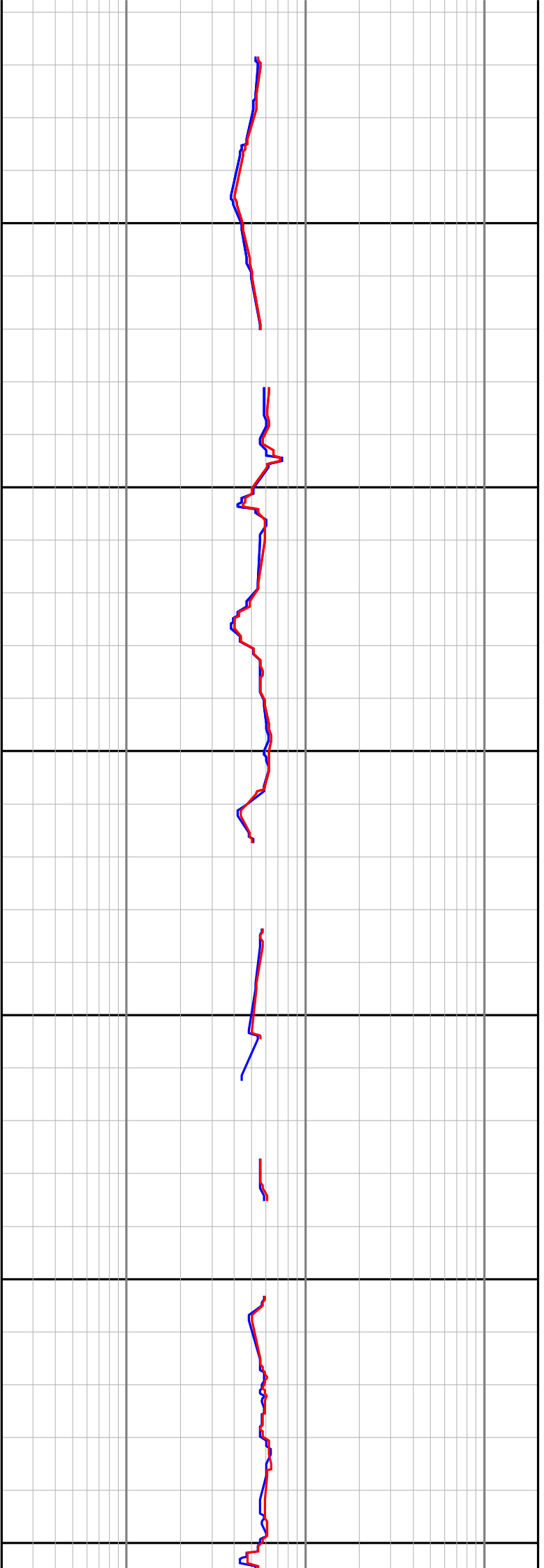
1975

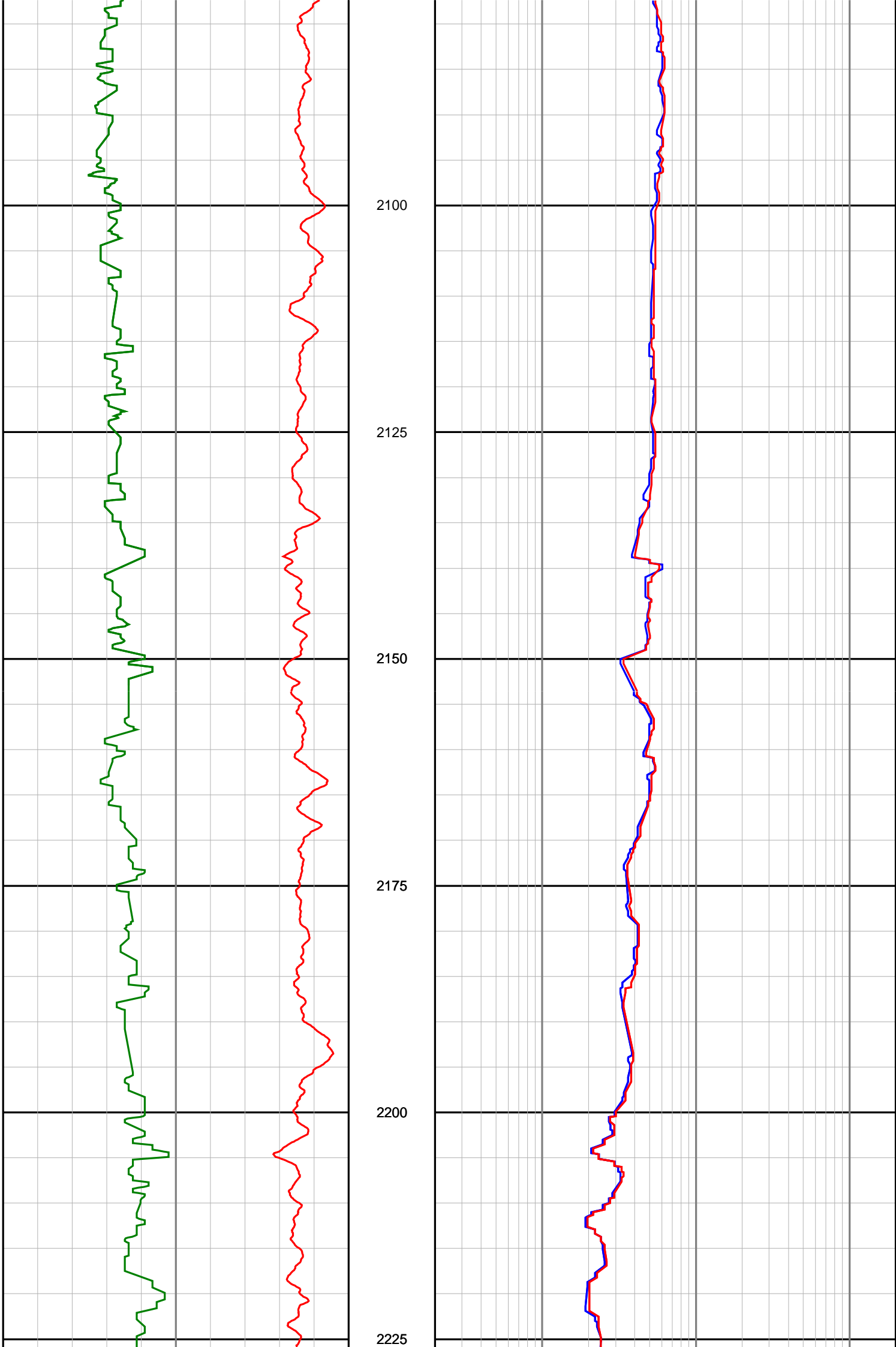
2000

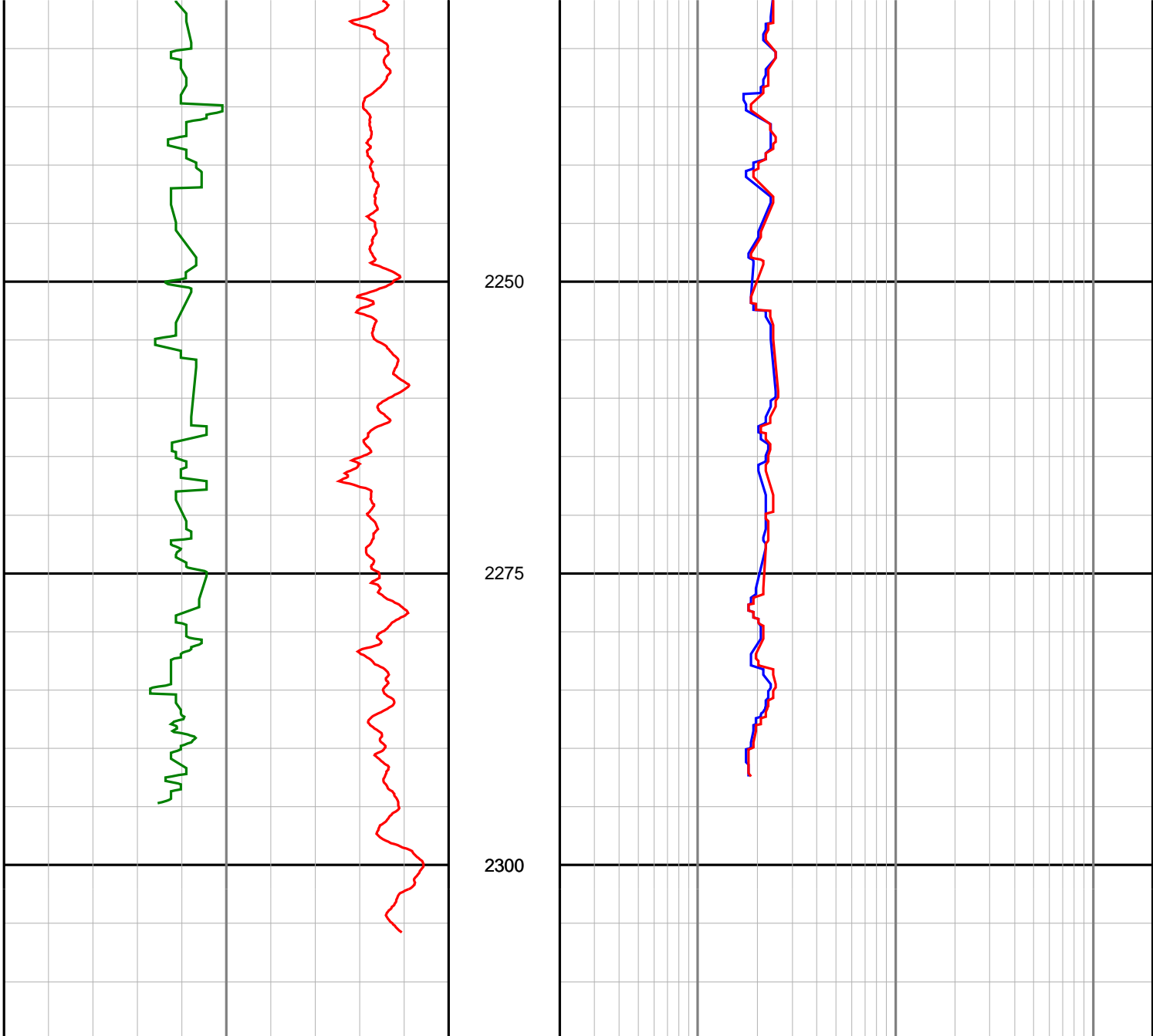
2025

2050

2075







<p align="center">Gamma Ray (SGRC) api</p> <p>0 200</p>	<p align="center">Depth MD 1:500</p>	<p align="center">Ext Shallow Phase Res (SEXP) ohmm</p> <p>0.2 200</p>
<p align="center">Rate Of Penetration (SROP) m/hr</p> <p>500 0</p>		<p align="center">Shallow Phase Res (SESP) ohmm</p> <p>0.2 200</p>
		<p align="center">Medium Phase Res (SEMP) ohmm</p> <p>0.2 200</p>
		<p align="center">Deep Phase Res (SEDP) ohmm</p> <p>0.2 200</p>